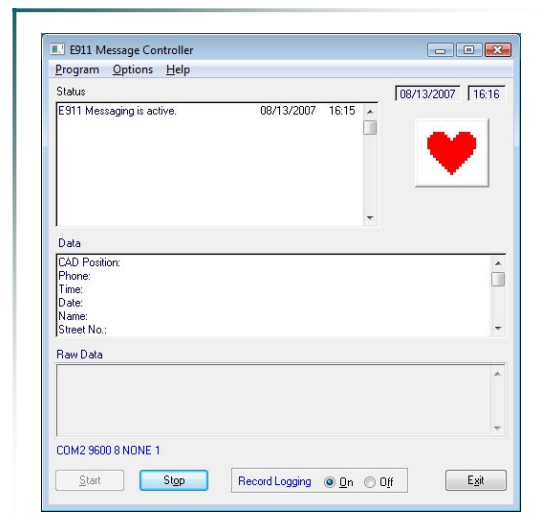


## CAD / E911 INTERFACE

*Larimore Associates has provided critical E911 interfaces in conjunction with a number of different protocols from telephone companies across the nation.*

- ◆ We will interface with any phone company protocol
- ◆ We provide two options for filling in E911 information:
  - Automatically - Once the user accepts the call, the E911 information will prefill the appropriate fields
  - User determined - The dispatcher can listen to the caller and then choose to accept the 911 information or disregard it (This is helpful for multiple cell phone calls reporting the same incident.)
- ◆ With either method, the user can verify and edit, as necessary, the name, address and phone number of the caller
- ◆ Calls are automatically logged once the 911 information is received; the call must be completed, cannot be deleted
- ◆ Preset history log of 911 calls for reference purposes



## STATE/NCIC INTERFACE

*Larimore Associates has successfully provided access to State/NCIC for vehicle and name information queries through both CAD and Mobile Data units.*

- ◆ We have accomplished this using the message switch used in mobile communications
- ◆ We have also used TCP/IP technology
- ◆ An alternative way to access State/NCIC is terminal emulation - the dispatcher can toggle to in another window on the same PC as the Larimore applications
- ◆ We have met all protocol requirements for several states, and can look into how we would be able to access your State/NCIC through a seamless interface